

Emphasis



## Emphasis

Is where your eye goes first in the photograph



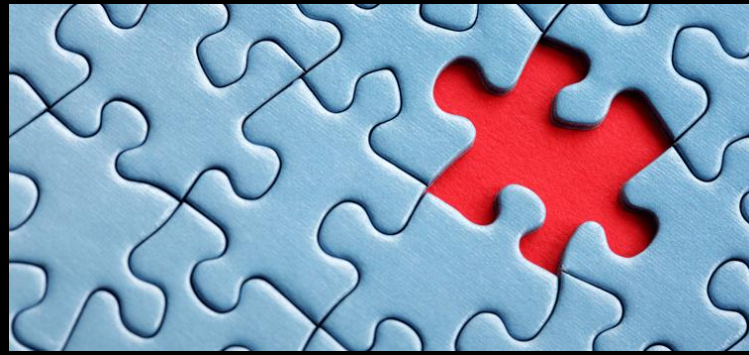
Usually the main subject and eye-catching.  
Photographers who master emphasis can control how  
the viewer views the photograph.

# Emphasis Color



Using a small bit of color in a dark, grey or neutral photograph can immediately draw the viewer's attention

# Emphasis Color



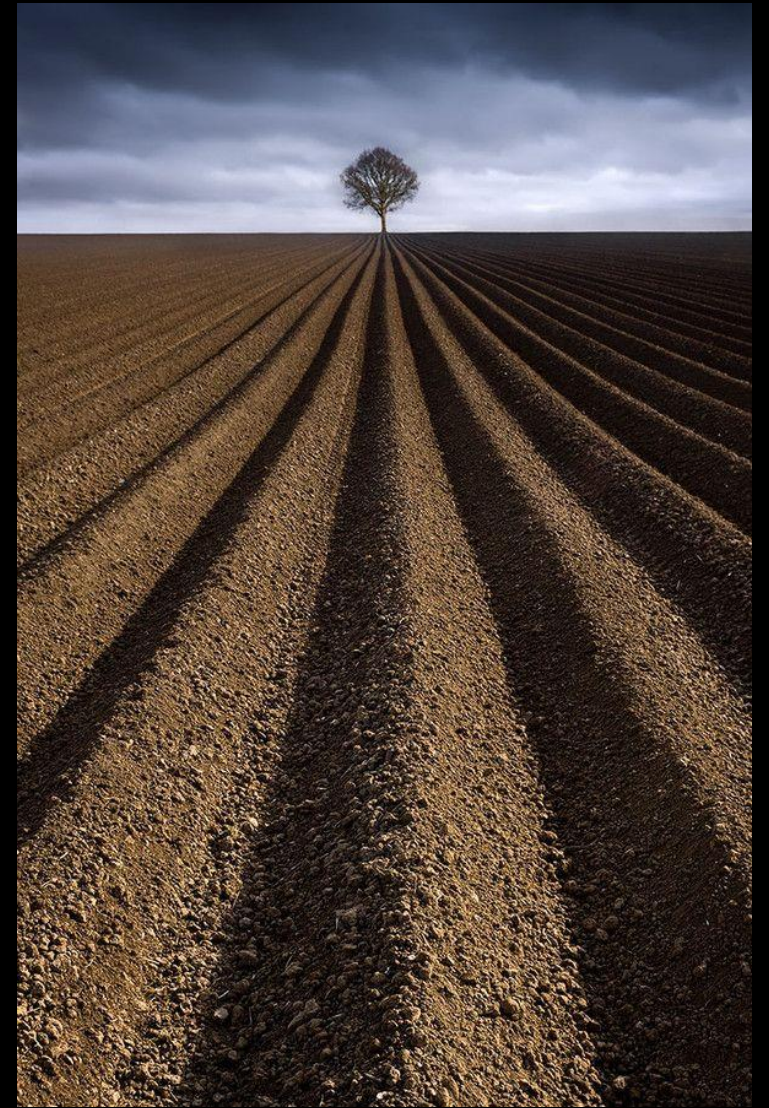
Using a different / brighter color than the rest in an image can result in the eye going to the “odd one out” quickly.

# Emphasis Perspective & Size



Using perspective and size, we can make certain objects stand out from the rest.

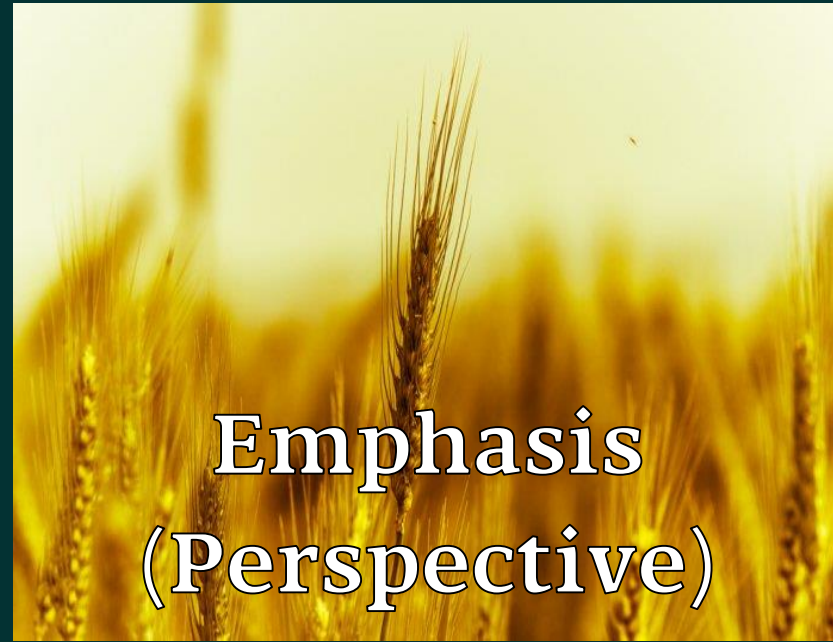
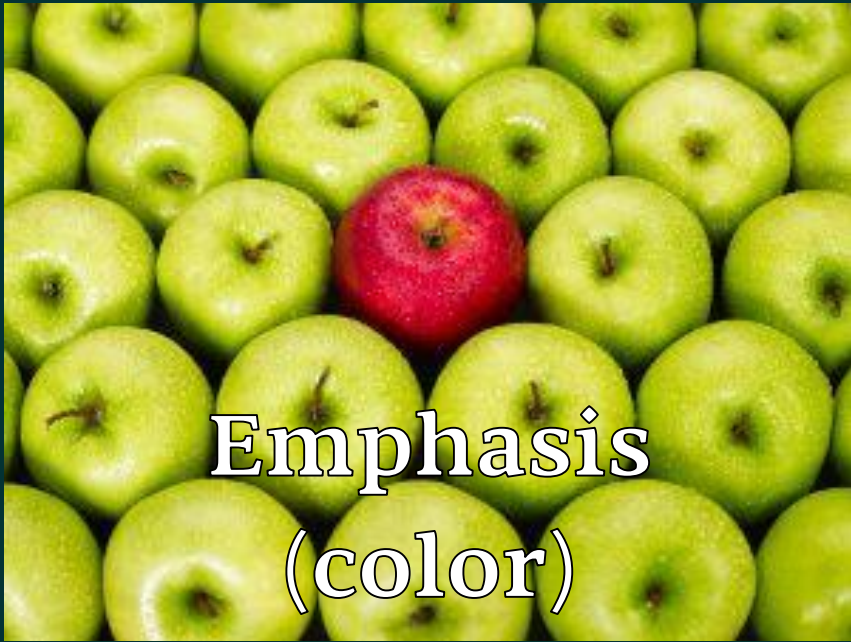
# Emphasis Line



Using leading lines can help direct the eye to the main part of the photograph.

# Your Assignment

Use a phone / tablet device and take 3 pictures demonstrating:



Rubric / Scoring Criteria (per image)	Total Score / 35	Score
Compositional (use of emphasis) – Each Image		/5
Originality / Creativity – Each Image		/5
Entire Project On-Time – All Together		/5